

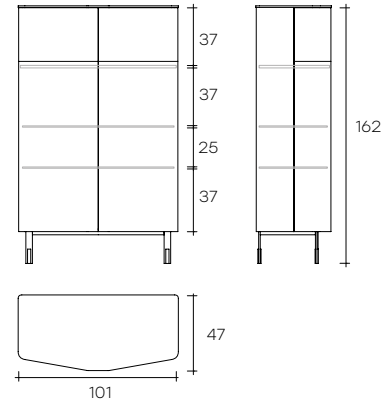


lady pli 

DESIGN
STUDIO KLASS

modello registrato
registered model

portata su ogni piano: 25 kg
portata sul top: 30 kg
load capacity on each shelf: 25 kg
load capacity on the top: 30 kg



Madia con struttura in legno laccato Grigio Lava, top in vetro fum  da 10 mm, ante in vetro extralight curvato da 6 mm parzialmente retroverniciate, 2 ripiani interni in vetro extralight da 8 mm temperato. Ante con meccanismo di apertura push-pull. Sistema di illuminazione a LED integrato nei fianchi della struttura.

Cupboard with Lava Grey lacquered wood structure, top in 10 mm smoked glass. Doors in 6 mm curved extralight glass, partially back-painted. 2 internal shelves in 8 mm tempered extralight glass. Doors with push-pull closing mechanism. LED lighting system integrated into the internal sides of the structure.

dimensioni L, P, H
dimensions L, W, H
(cm)

COD./CODE

L

P/W

H

peso netto
net weight
(kg)

peso lordo
gross weight
(kg)

volume imballo
package volume
(m³)

Ante parzialmente retroverniciate, finitura "Marrone-Grey".
Doors partially back-painted, "Brown-Grey" finish.

° LPM101/
VX-MG

101

47

162

97

158

1,56

Ante parzialmente retroverniciate, finitura "Grigio Tempesta".
Doors partially back-painted, "Storm Grey" finish.

° LPM101/
VX-TE

101

47

162

97

158

1,56

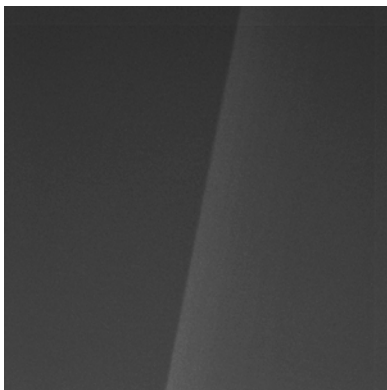
° Prodotto marcato CE, disponibile solo per mercato europeo.
° CE certification, only for European countries available.



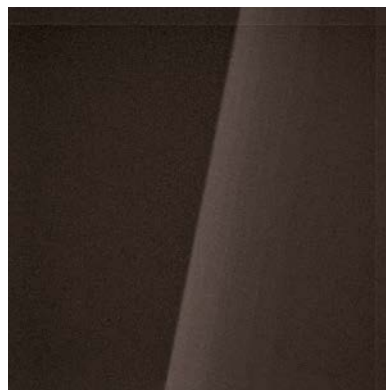
FINITURE
FINISHES

Struttura in legno laccato
Laquered wood structure

grigio lava
lava grey

Ante in vetro extralight retroverniciato
Back-painted extralight glass doors

grigio tempesta
storm grey



marrone-grey
brown-grey